

Eastmond Publishing Ltd (Autograph)

PO Box 46, Oundle, Peterborough, PE8 4JX, UK

Tel: +44 (0)1832 273444

Email: support@autograph-maths.com

Technical Support: +44 (0)151 630 4492

Fax: +44 (0)1832 273529

Web: www.autograph-maths.com

Autograph 3.3 Installation

1. Start the Autograph installer:
 - a. If you have the Autograph installer on CD then insert the CD into your drive. If the CD does not autoboot then double-click the CDFrontEnd.exe file on the CD.
 - b. If you have downloaded the Autograph installer then double-click the exe. The Autograph installer can be downloaded from:

<http://www.autograph-maths.com/download/>

2. Select Install in the Start Screen.

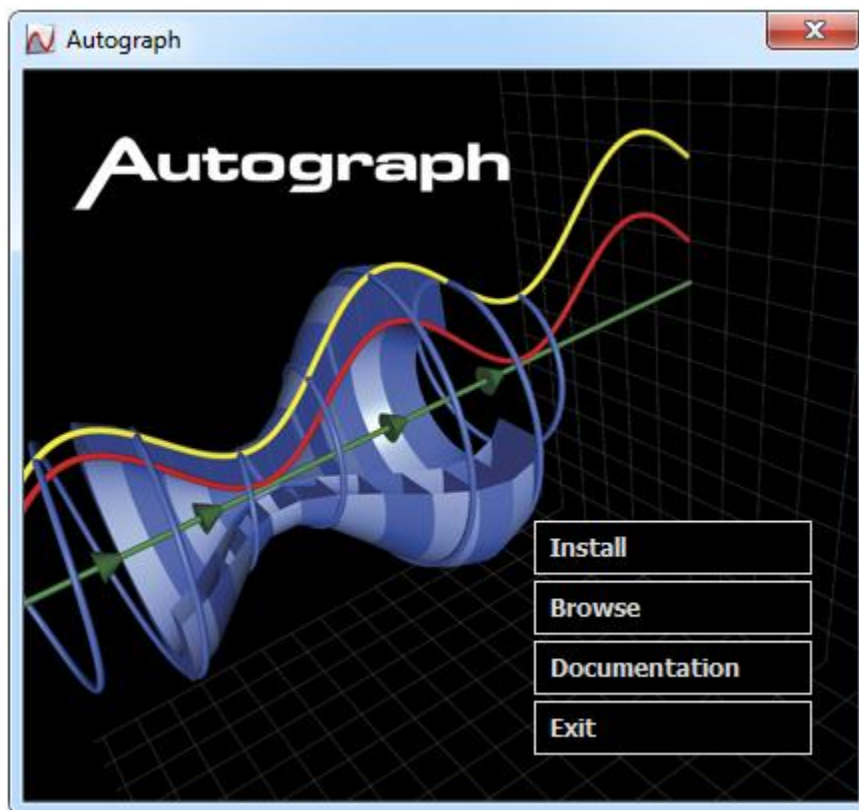


Figure 1. Start screen

3. The User Account Control dialog will open, see Figure 2. Click Yes.

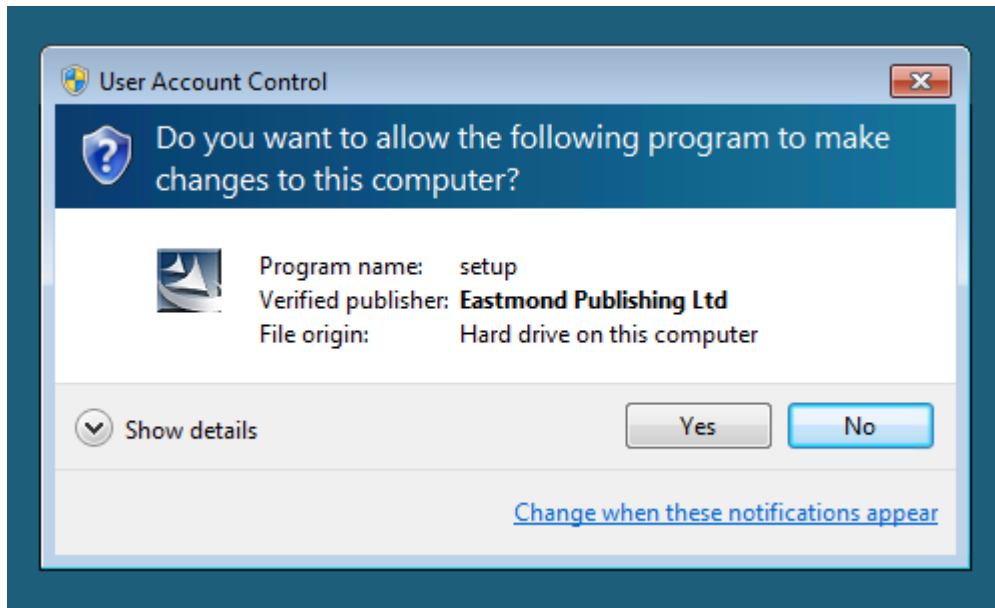


Figure 2. User Account Control

4. Click Next on the Welcome screen in Figure 3.



Figure 3. Welcome screen

5. Read and accept the terms in the licence agreement and click Next.

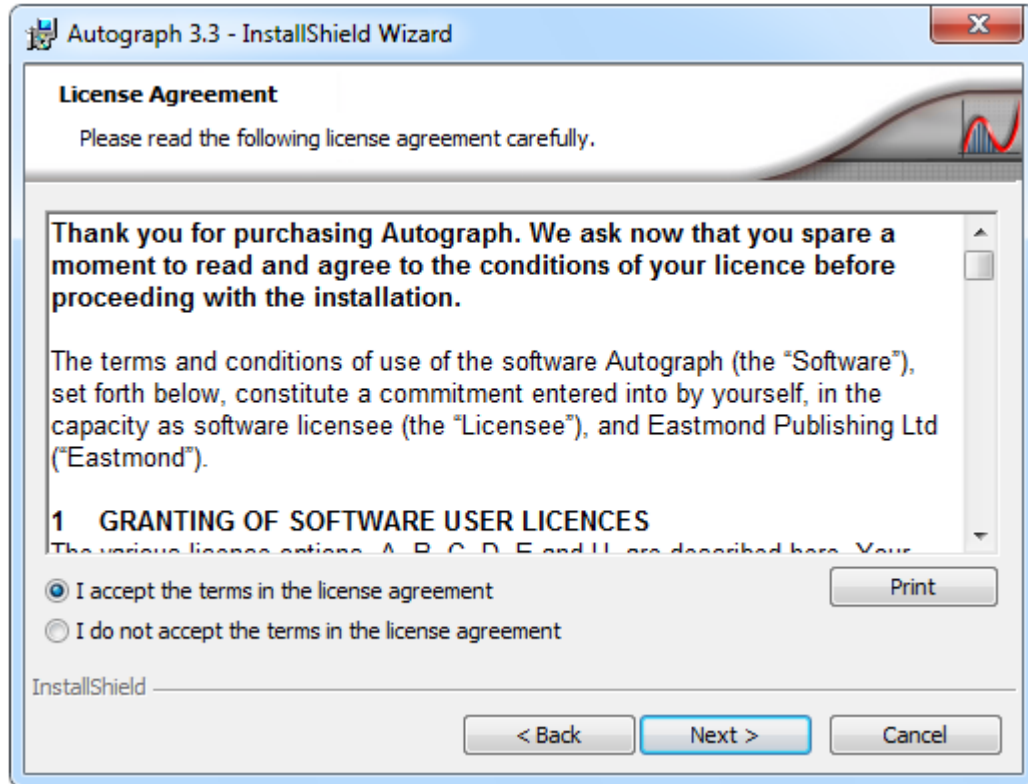


Figure 4. Licence Agreement

6. You can change the folder that Autograph is installed to in the Destination Folder dialog in Figure 5. We recommend not changing the default settings. Click Next.

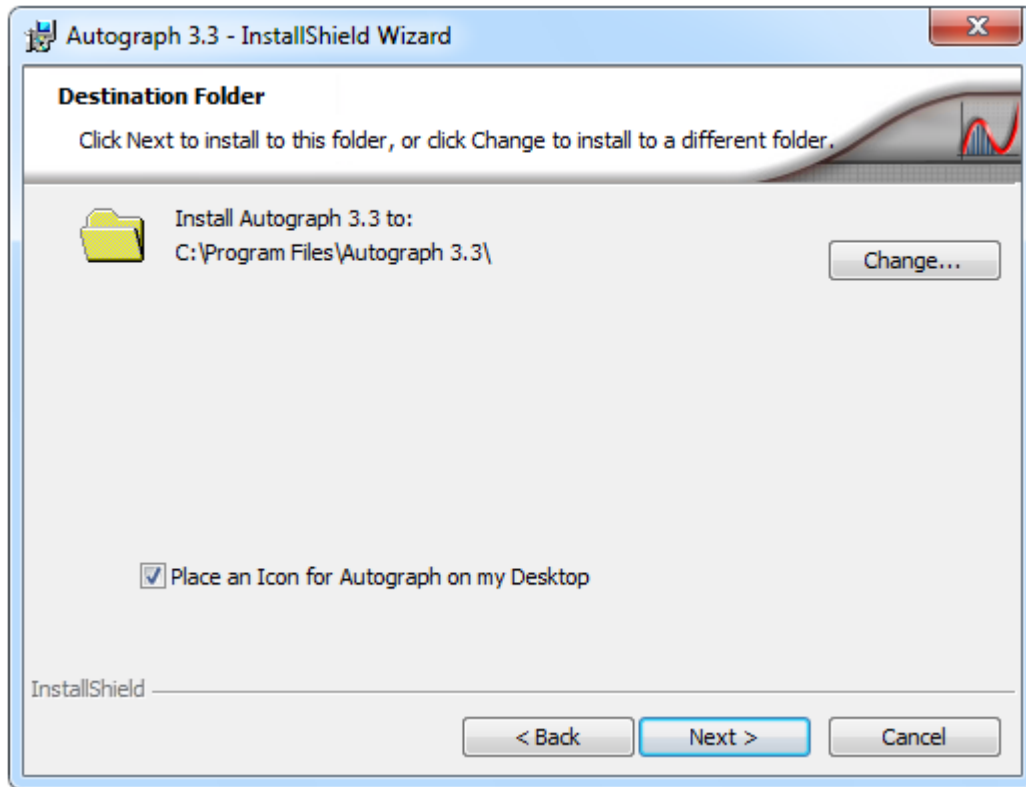


Figure 5. Destination Folder

7. In the Setup Type dialog in Figure 6 you can choose what type of installation to perform:
 - a. In a Standard installation will install all components of Autograph. If you select this option go to Step 11. This is the recommended option for most users.
 - b. In a Custom installation you can change advanced install options. If you select this option go to Step 8.

Click Next.

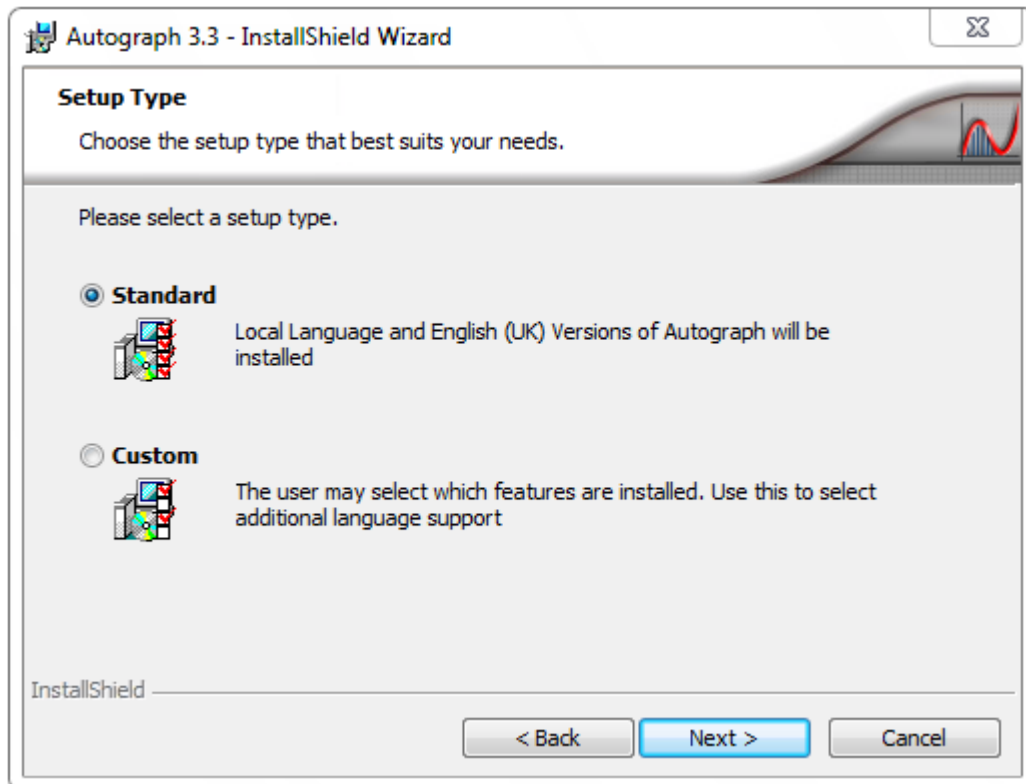


Figure 6. Setup Type

8. You can change the folder that Autograph Licence file is installed to in the Licence File Location dialog in Figure 7. We recommend not changing the default settings. Click Next.

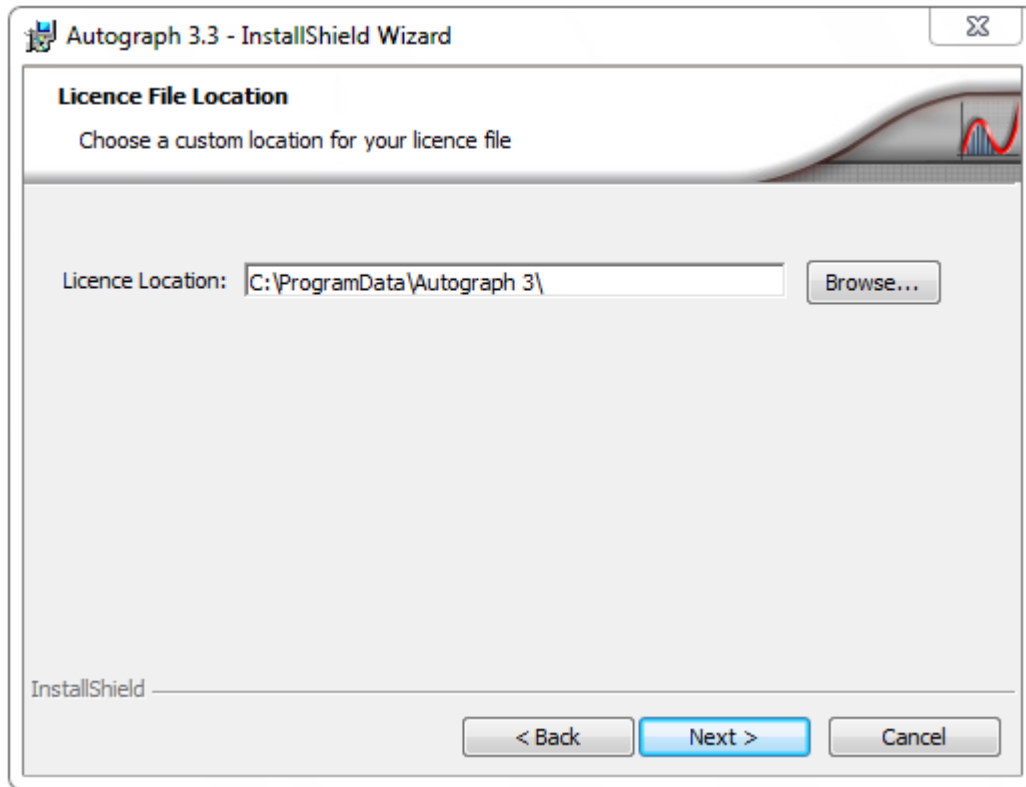


Figure 7. Licence File Location

9. You can choose to not install the Autograph Web Player in the Custom Settings dialog in Figure 8. However, the Autograph Web Player is required for viewing Autograph files in a browser. Therefore we would recommend keeping the default settings unless the web player has been previously installed from the web. Click Next.

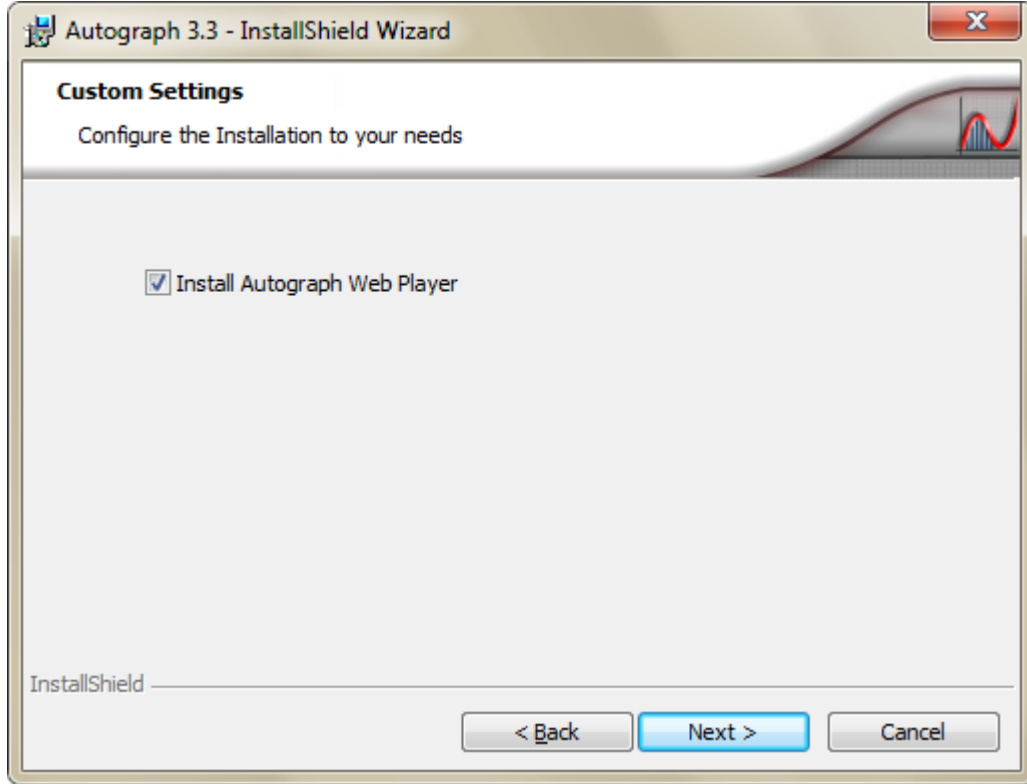


Figure 8. Custom Settings

10. You are now ready to install Autograph. Click Install.

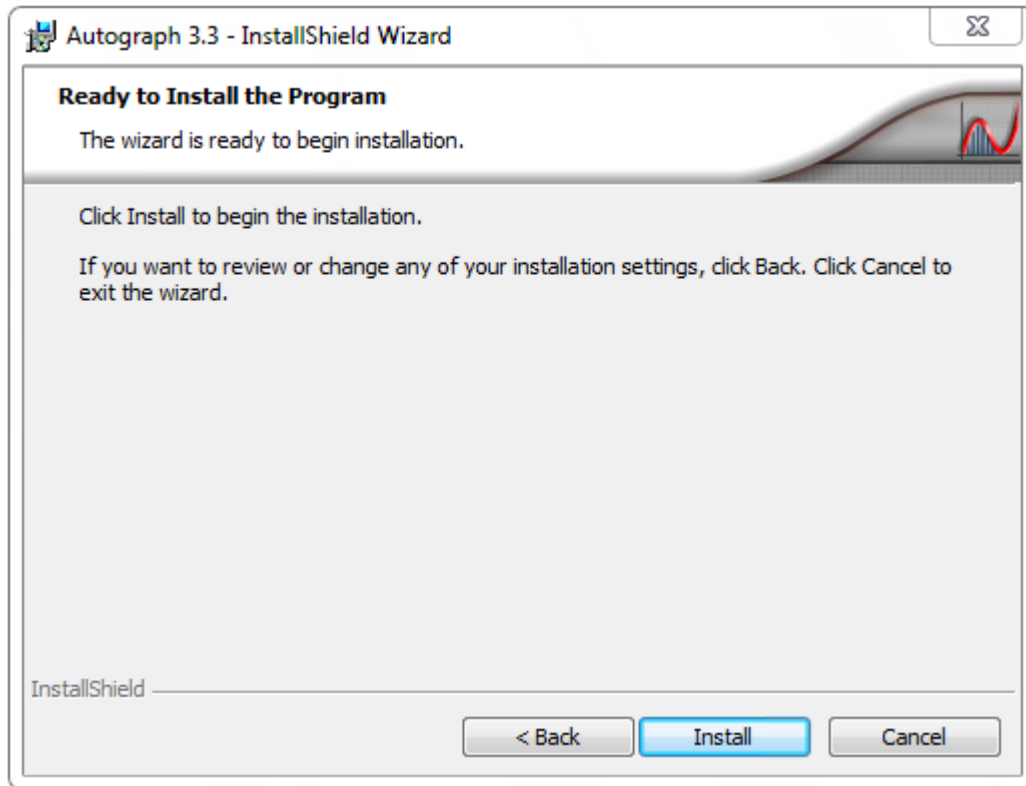


Figure 9. Ready to Install the Program

11. When the installation completes the InstallShield Wizard Completed dialog will appear. If there have been any issues during the installation tick the Show the Windows Installer Log option (if present). This log will be used by our team to give you technical support. Click Finish.

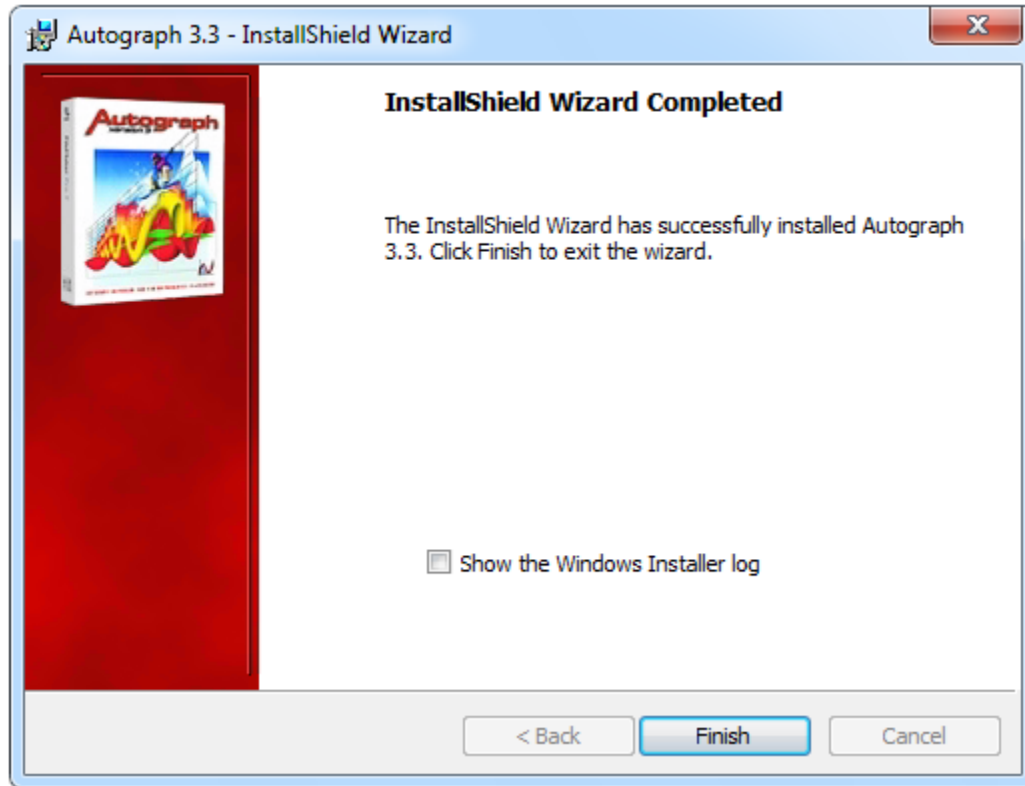


Figure 10. InstallShield Wizard Completed

12. Double-click on the Autograph 3.3 shortcut on the desktop. The Activate or Trial Autograph dialog will open, as in Figure 11.

If you are trialing Autograph click Finish and Autograph will open. You then have 30 days in which to evaluate Autograph. Please contact us at support@autograph-maths.com if you would like any help or resources. To upgrade to the full version click Purchase Autograph.

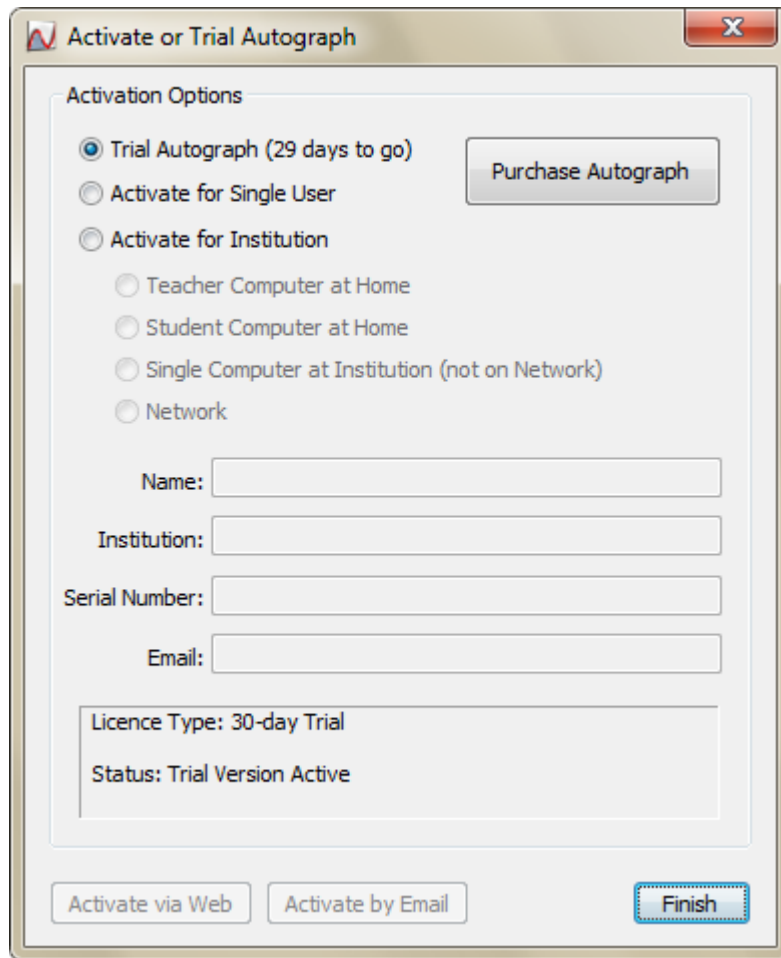


Figure 11. Activate or Trial Autograph

13. Select the appropriate activation option:

Activate for Single User

If you have a single user licence.

Activate for Institution

If you have a school licence, select this option and the appropriate sub-option.

Teacher Computer at Home

If installing on a teacher's computer that will be used at home.

Student Computer at Home

If installing on a student's computer that will be used at home. This is only available with the Extended School Site Licence.

Single Computer at Institution (not on Network)

If installing on a school computer that will not always be connected to the network.

Network

If you have installed Autograph on a network and need to activate the shared licence file. Please refer to the separate network installation guide.

14. Enter your Name, Institution (if applicable), Serial Number or ID, and Email. For Teacher Computer at Home and Student Computer at Home installations the email address must be unique to that teacher or student. There are two methods of activation:
- Activate via Web is the preferred solution as it is immediate. The computer must be connected to the internet for this to be successful. If you click this option go to Step 15.
 - Activate via Email is only to be used if the computer is not connected to the internet. If you click this option go to Step 17. This option is not available for Teacher Computer at Home and Student Computer at Home installations.

The screenshot shows a dialog box titled "Activate or Trial Autograph". It contains the following elements:

- Activation Options:** A group of radio buttons for selecting the activation method:
 - Trial Autograph (29 days to go)
 - Activate for Single User
 - Activate for Institution
- Sub-options:** A sub-group of radio buttons for selecting the user type:
 - Teacher Computer at Home
 - Student Computer at Home
 - Single Computer at Institution (not on Network)
 - Network
- Text Fields:** Four input fields for user information:
 - Name: George Osborne
 - Institution: Inner City Comprehensive
 - Serial Number: x78j9-6a2df-48I8d-6XOzE-CxCCJ
 - Email: george@osborne.org
- Buttons:** A "Purchase Autograph" button is located to the right of the "Activate for Single User" option. At the bottom, there are three buttons: "Activate via Web" (highlighted in blue), "Activate by Email", and "Finish".
- Summary:** A box at the bottom displays "Licence Type: 30-day Trial" and "Status: Trial Version Active".

Figure 12. Entering licence details

15. In the Web Activation dialog click Activate now.

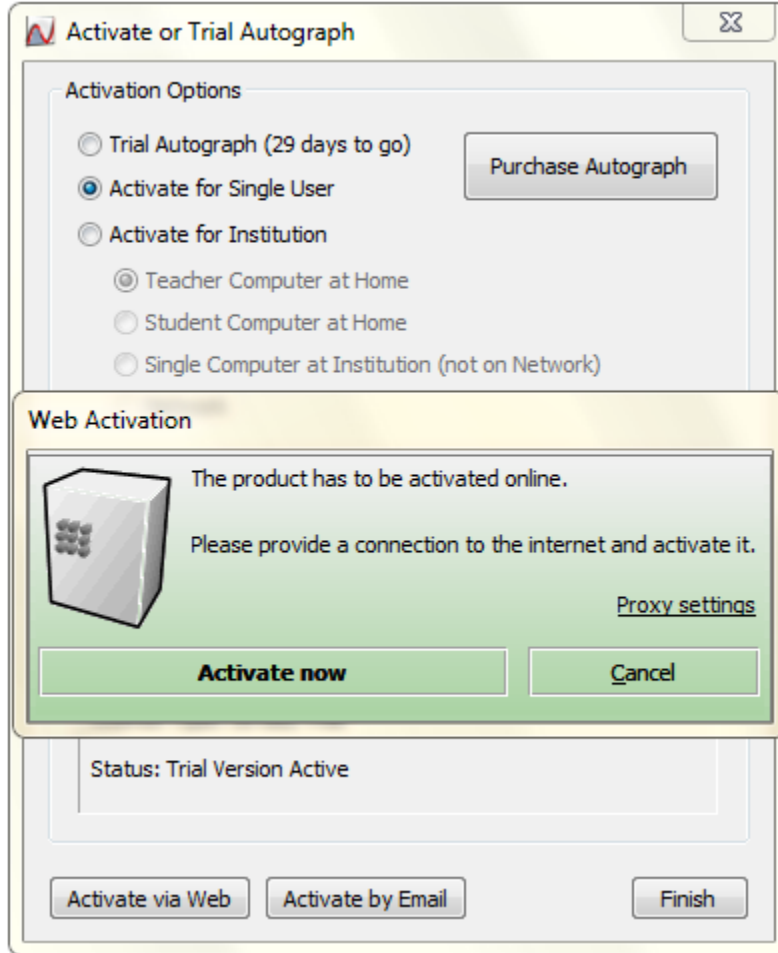


Figure 13. Web Activation

16. When the activation succeeds you will see the Online Activation was successful dialog. Click Close and then Finish and you will have completed the installation of Autograph.

If the activation was not successful check your internet connection and try again. If the problem persists return to Step 14 and click Activate via Email.

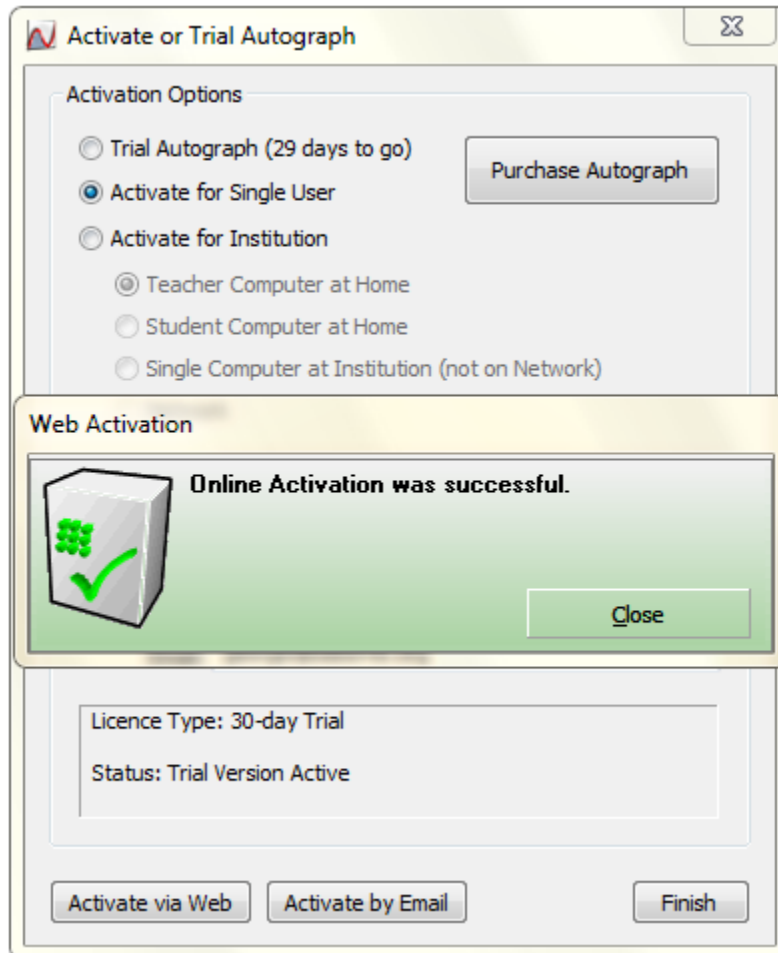


Figure 14. Online Activation was successful

17. When you click Activate by Email an email is automatically generated in your default mail application, as shown in Figure 15. You will also see an Autograph Information dialog explaining that an email has been generated and what you need to do next, see Figure 16.

If you see the Autograph Information dialog but no mail client has opened with the generated email, then it is likely that you have not got a default mail client. However, the contents of the email will have been copied to your clipboard so you can paste it (using Ctrl-V) into your usual email program.

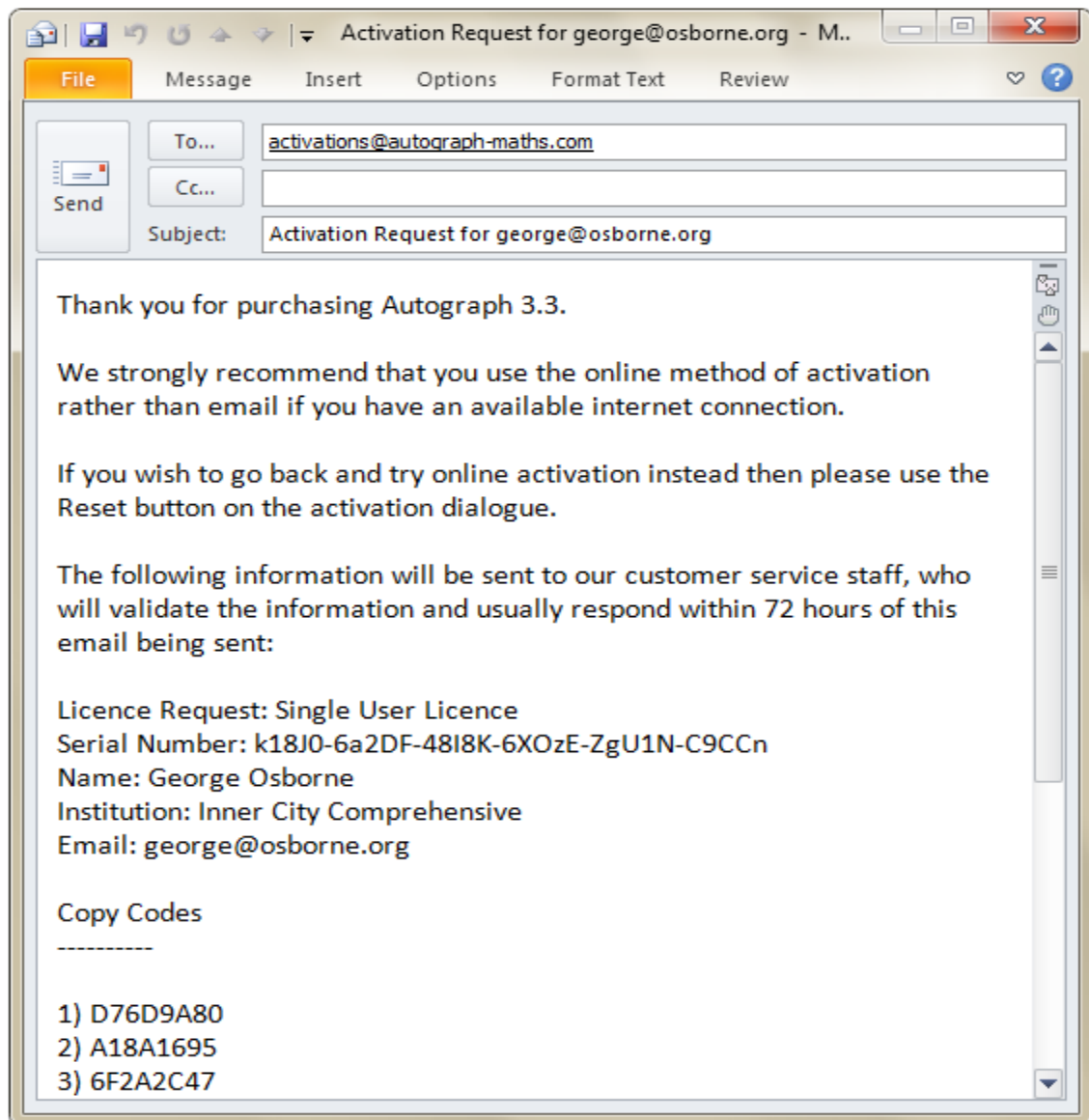


Figure 15. Automatically generated email in default mail application

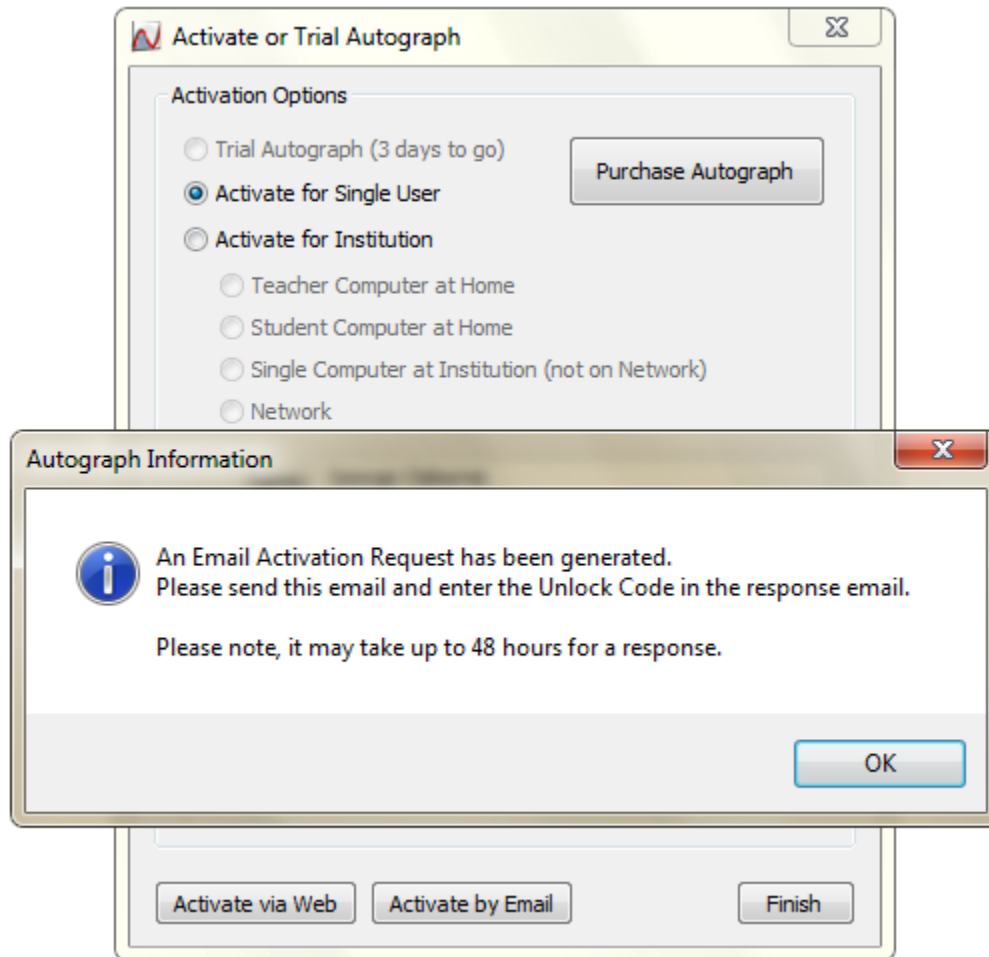


Figure 16. Autograph Information dialog confirming email generation

18. Within 48 hours you will be sent an email with an Unlock Code. Enter this code into Activate or Trial Autograph dialog, as in Figure 17, and click Activate.

The screenshot shows a dialog box titled "Activate or Trial Autograph". It contains the following elements:

- Activation Options:** A group of radio buttons with the following options:
 - Trial Autograph (3 days to go)
 - Activate for Single User
 - Activate for Institution
 - Teacher Computer at Home
 - Student Computer at Home
 - Single Computer at Institution (not on Network)
 - Network
- Purchase Autograph:** A button located to the right of the "Activate for Single User" option.
- Name:** A text input field containing "George Osborne".
- Institution:** A text input field containing "Inner City Comprehensive".
- Unlock Code:** A text input field containing "pnEJY-682DF-5udA3-6UK0E-Mf21Q-CgCCx".
- Email:** A text input field containing "george@osborne.org".
- Licence Type:** A text area displaying "Licence Type: Single User Licence".
- Status:** A text area displaying "Status: Waiting for Unlock Code".
- Buttons:** A row of four buttons at the bottom: "Activate" (highlighted in blue), "Resend Email", "Reset", and "Finish".

Figure 17. Enter Unlock Code

19. The dialog in Figure 18 confirms the activation was successful. Congratulations!

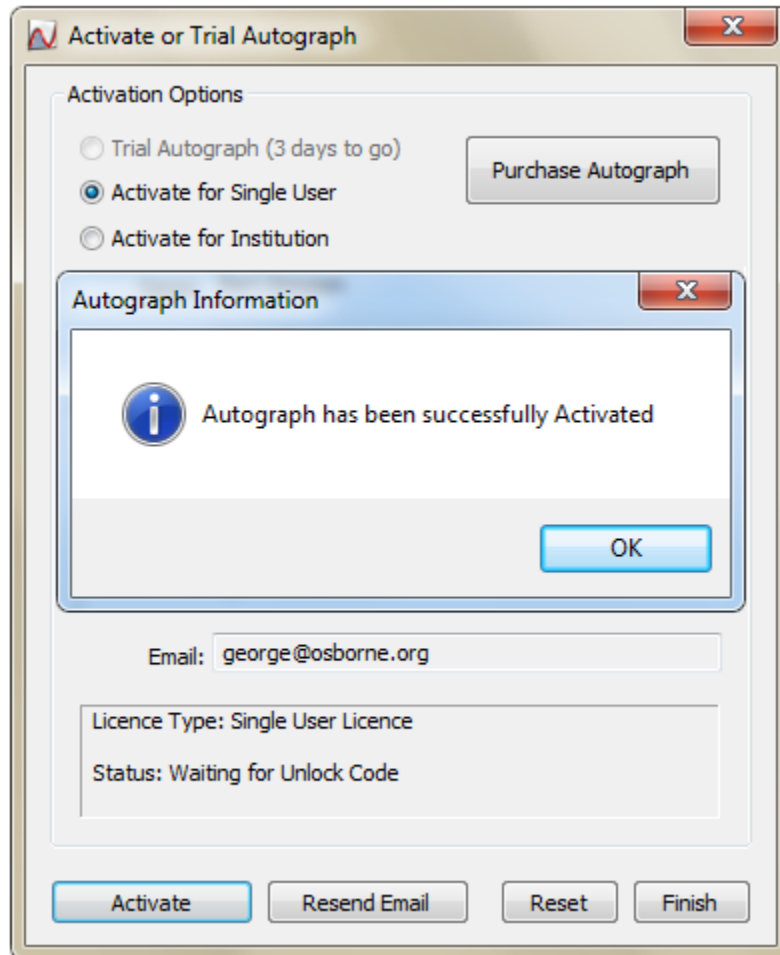


Figure 18. Autograph has been successfully activated