

**Eastmond Publishing Ltd (Autograph)**

PO Box 46, Oundle, Peterborough, PE8 4JX, UK

Tel: +44 (0)1832 273444

Email: [support@autograph-maths.com](mailto:support@autograph-maths.com)

Technical Support: +44 (0)151 630 4492

Fax: +44 (0)1832 273529

Web: [www.autograph-maths.com](http://www.autograph-maths.com)

# Autograph Network Installation

---

The Autograph network installation is MSI based and designed to be performed using a managed network technology via Group Policy or other Network Management System. It is also suitable for deployment using Terminal Services.

Where deploying the MSI, it is required that the package is created either by an administrative installation or that a snap shot of the installation on the server be taken. Copying the CD across will not work because the Licensing of Autograph will not be setup. We strongly recommend you follow the instructions below for the GPO installation.

## Serial Numbers and Institution IDs

With your network licence, you have been provided with a Serial Number, and one or two Institution IDs. Your serial number is to be used for this network installation only. There are two types of Institution ID: Teacher ID and Student ID which are used for activating Autograph 3.3 Teacher Edition and Autograph 3.3 Student Edition respectively. Student IDs are only provided if you have an Extended Site Licence.

Teacher IDs can only activate Autograph 3.3 Teacher Edition and Student IDs can only activate Autograph 3.3 Student Edition. There are two ways of obtaining these editions:

1. Where possible, the simplest solution is for them to download the appropriate installer:
  - a. Teachers should download Autograph 3.3 Teacher Edition from [www.autograph-maths.com/downloads/windows/teacher](http://www.autograph-maths.com/downloads/windows/teacher)  
This package will accept only Teacher IDs.
  - b. Students should download Autograph 3.3 Student Edition from [www.autograph-maths.com/downloads/windows/student](http://www.autograph-maths.com/downloads/windows/student)  
This package will accept only Student IDs.
2. If you would rather avoid these large downloads then you can make copies of your Autograph 3.3 CD and distribute these to your teachers and students. The resulting Autograph 3.3 installation will need to be converted in order to be able to activate using the Institution IDs.
  - a. Teacher should download the Autograph 3.3. Teacher Edition converter from:

[www.autograph-maths.com/downloads/windows/converters/teacher](http://www.autograph-maths.com/downloads/windows/converters/teacher)

This will convert the Autograph 3.3 to Autograph 3.3 Teacher Edition.

- b. Students should download the Autograph 3.3 Student Edition converter from:

[www.autograph-maths.com/downloads/windows/converters/student](http://www.autograph-maths.com/downloads/windows/converters/student)

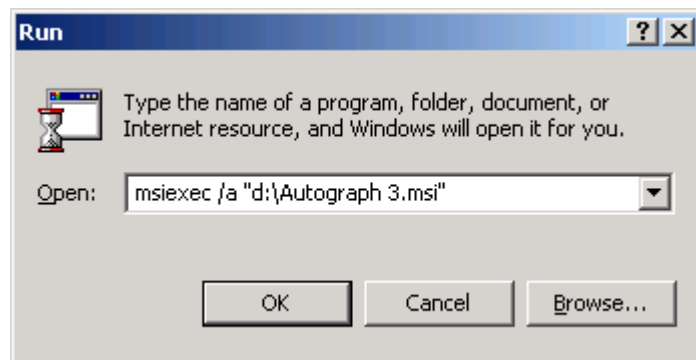
This will convert Autograph 3.3 to Autograph 3.3 Student Edition.

## Group Policy Installation

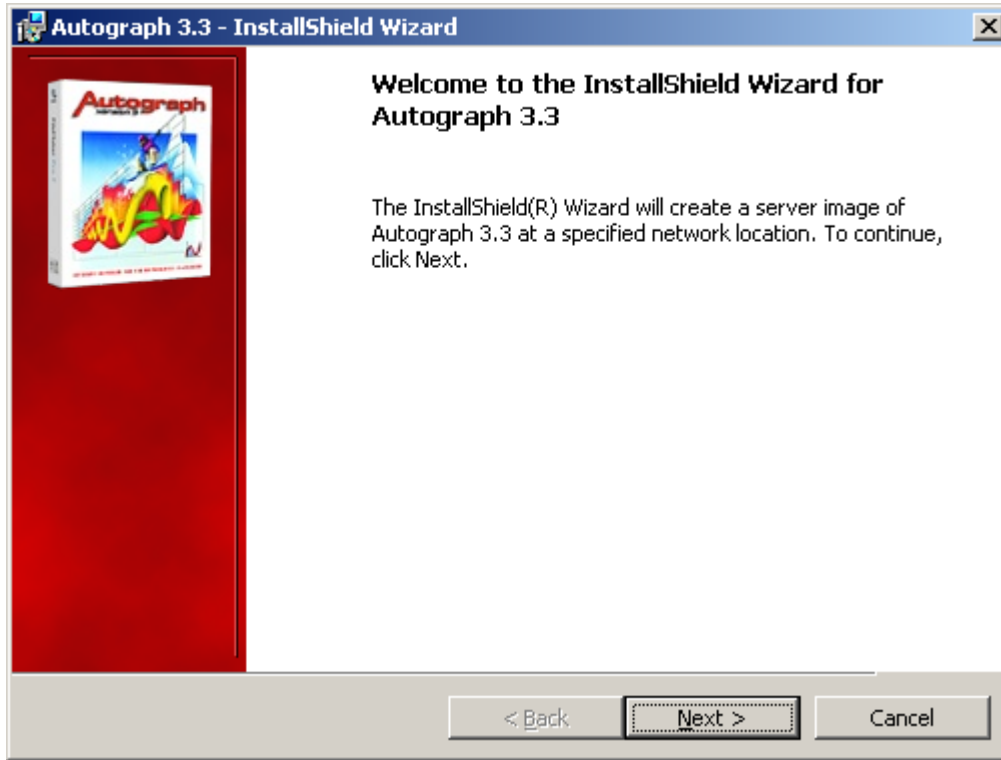
1. Logon to the Windows Server machine as the Administrator.
2. Insert the CD into your drive.
3. Click Start > Run.
4. Enter the following command line instruction:

```
msiexec /a "d:\Autograph 3.msi"
```

Where d: is the drive letter for your CD.

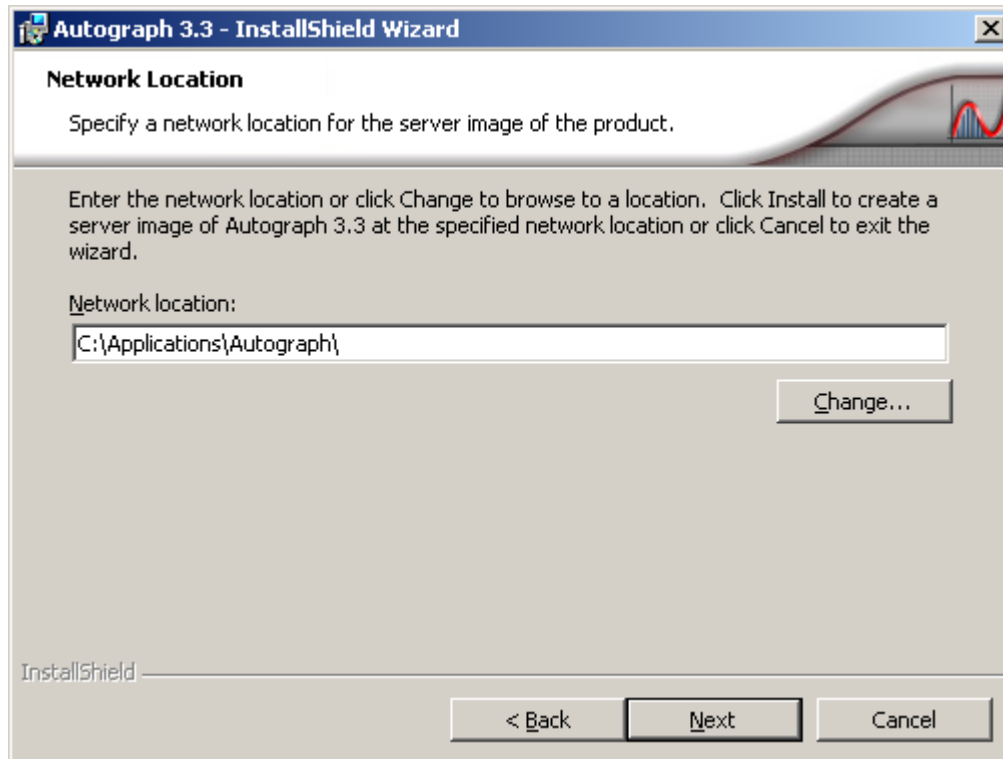


5. Click next on the dialog shown in Figure 1.



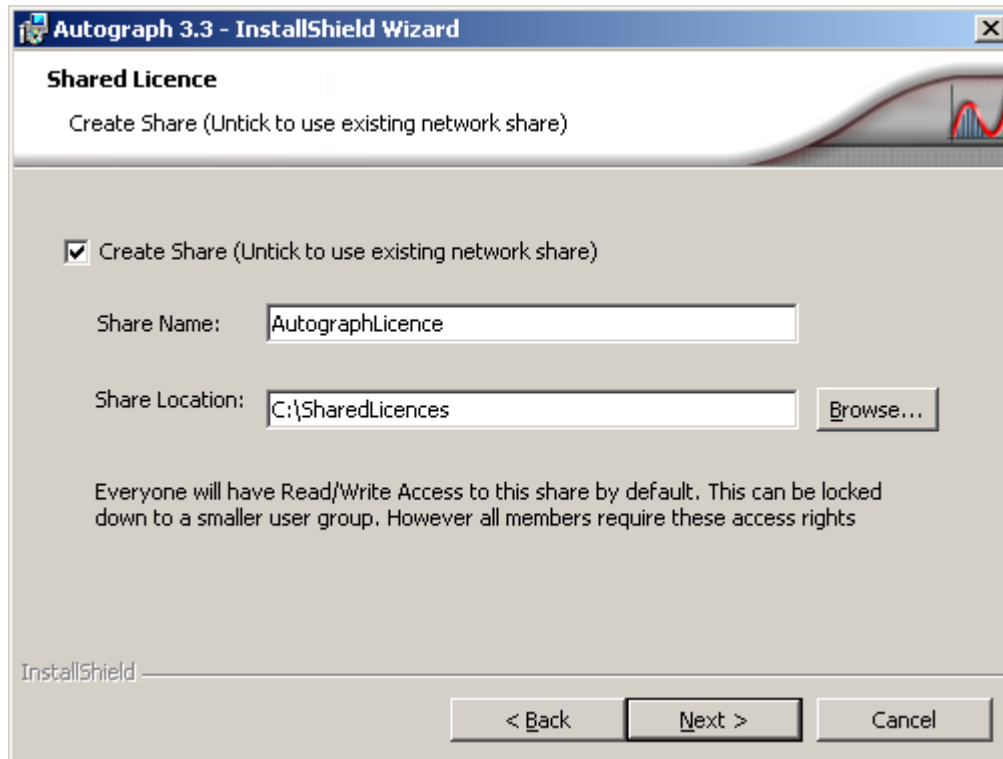
**Figure 1.** Administrative Welcome Dialog

6. Accept the terms of the Licence Agreement and click Next. Now select your installation package location. This should be within the network share on your server which contains your managed installations. In our case this is C:\Applications\Autograph\. This is shown in Figure 2:



**Figure 2.** Selecting your network file location

7. It is now necessary to specify a Share for the Autograph Licence File. Enter the Share name and location in the dialog in Figure 3. If you wish to use an existing Share then untick the Create Share checkbox, otherwise the Share will be automatically created for you.



**Figure 3.** Create a licence Share

8. Enter your customer information into the dialog shown in Figure 4. Your serial number should have been provided at the time of purchase. If there is some reason you cannot activate Autograph at this stage (e.g. no internet connection or you wish to create the licence share at a later date) then untick Activate Autograph during Administrative Install. If you choose to activate Autograph at a later date you will need to do so by opening Autograph on a client machine.

**Autograph 3.3 - InstallShield Wizard**

**Customer Information**  
Enter your details for activation of the shared licence

Activate Autograph during Administrative Install

Institution: Springfield High

Contact Name: Bart Simpson

Email Address: bart@simpson.com

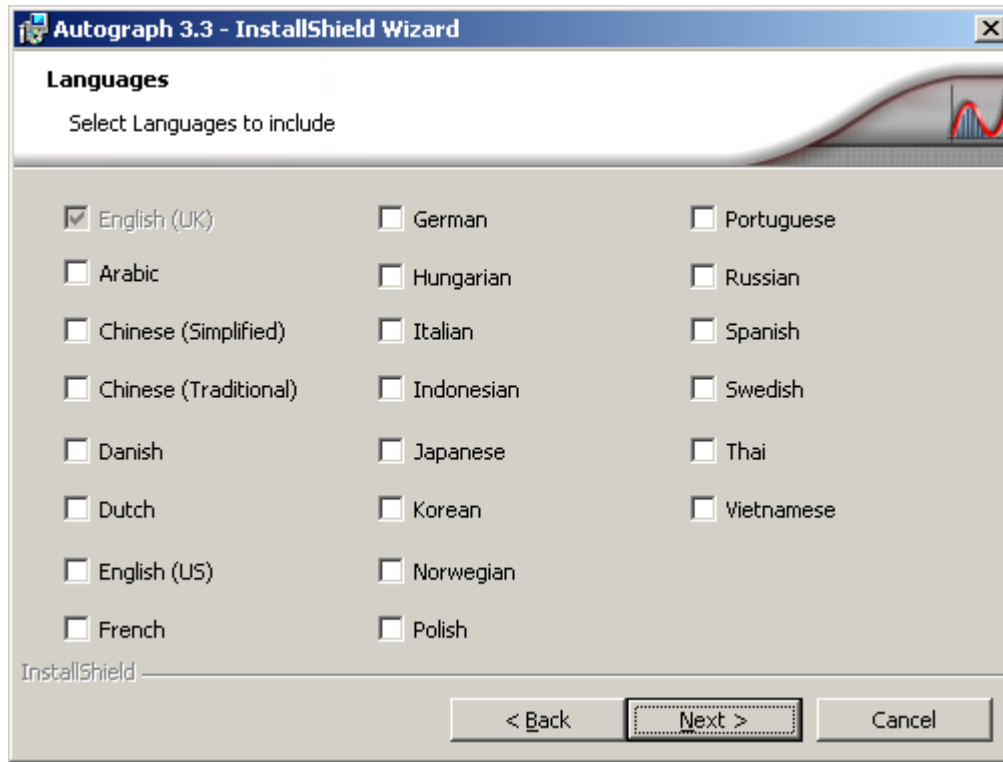
Serial Number: 7CgJc-6a2Df-48L86-6XOze-LgU1n-CnCCE

InstallShield

< Back    Next >    Cancel

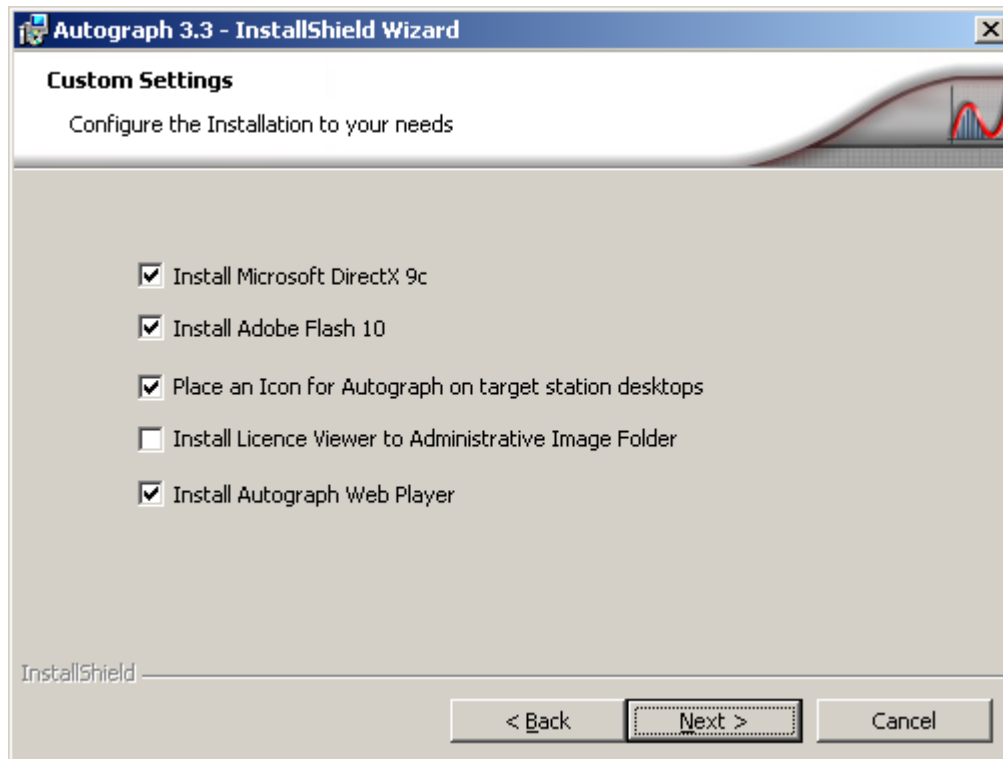
**Figure 4.** Customer information for activation

9. Choose the languages you would like installed from the dialog in Figure 5, and click Next.



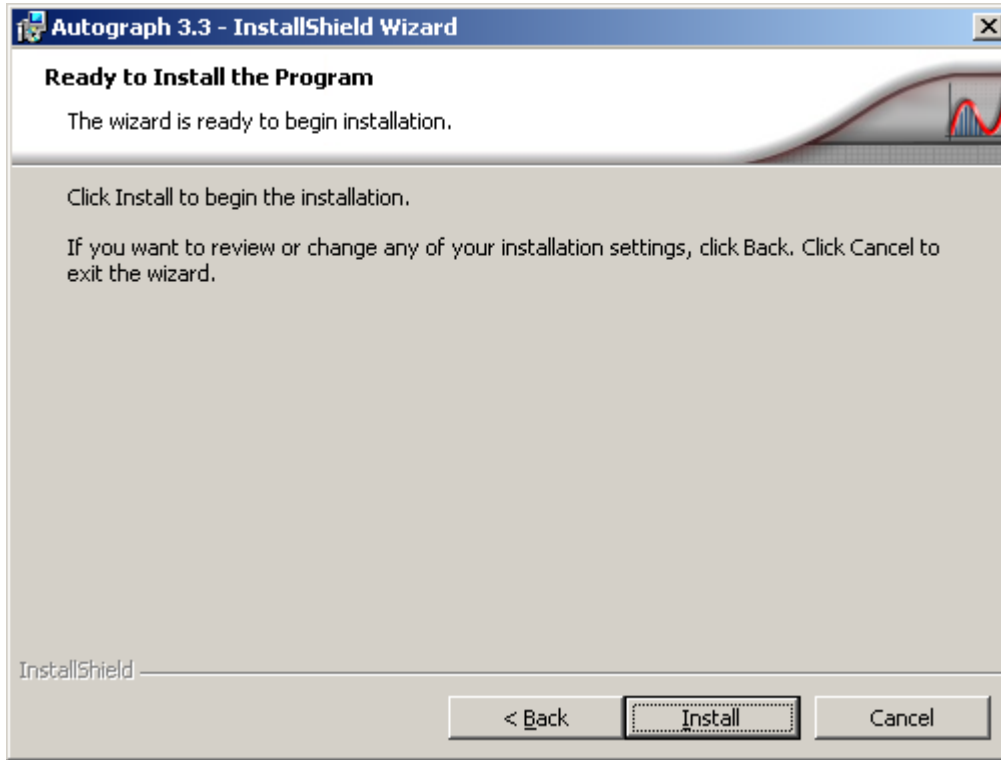
**Figure 5.** Language selection dialog

10. Autograph requires DirectX 9c and Adobe Flash 10 to be installed. You may unselect these if they are installed already. The Autograph Web Player is a plugin for Internet Explorer, Safari, Chrome and Firefox that allows Autograph files to be viewed on the web. The Licence Viewer is used to activate Autograph or view your current licence details. This is present on the CD but if you would like a local copy tick this checkbox.



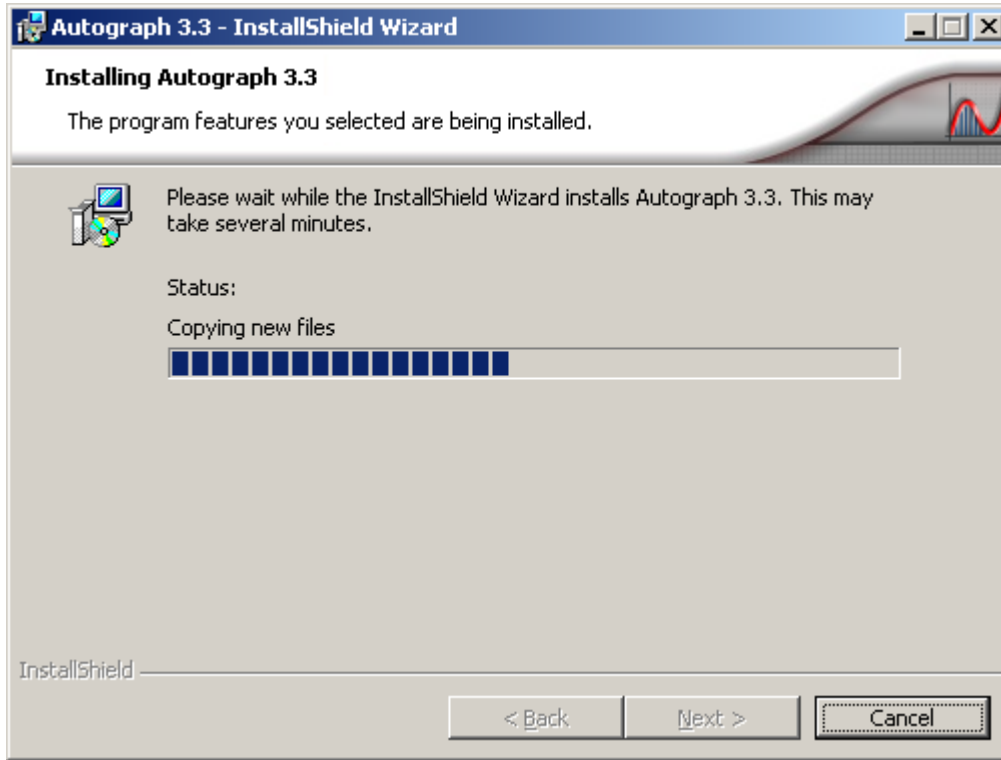
**Figure 6.** Customise the Autograph installation

11. Click Install.



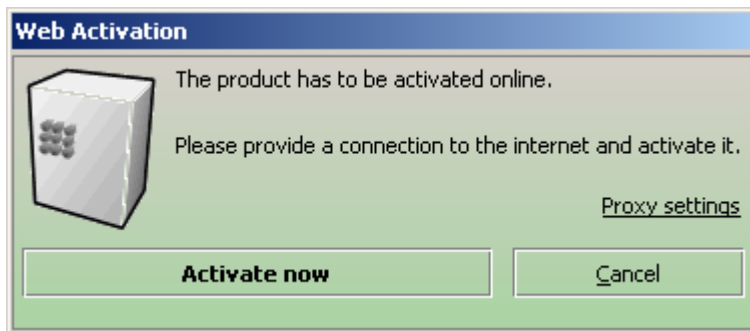
**Figure 7.** Ready to install!

12. If the package is installing correctly you should see the dialog in Figure 8.



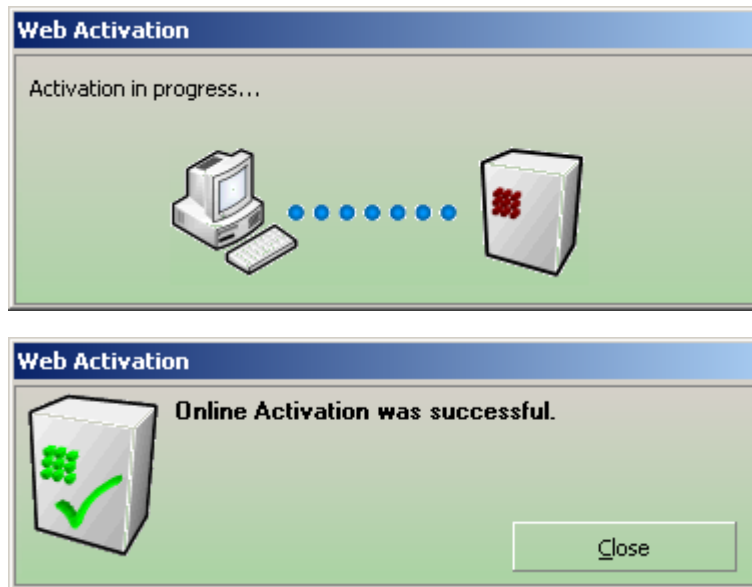
**Figure 8.** The Installation Progress Dialog

13. If you have chosen to Activate Autograph during Administrative Install in Step 8 then the dialog shown in Figure 8 will appear during the installation process. If you are using a proxy server for internet access click Proxy settings and enter the relevant details. Click the Activate now button.



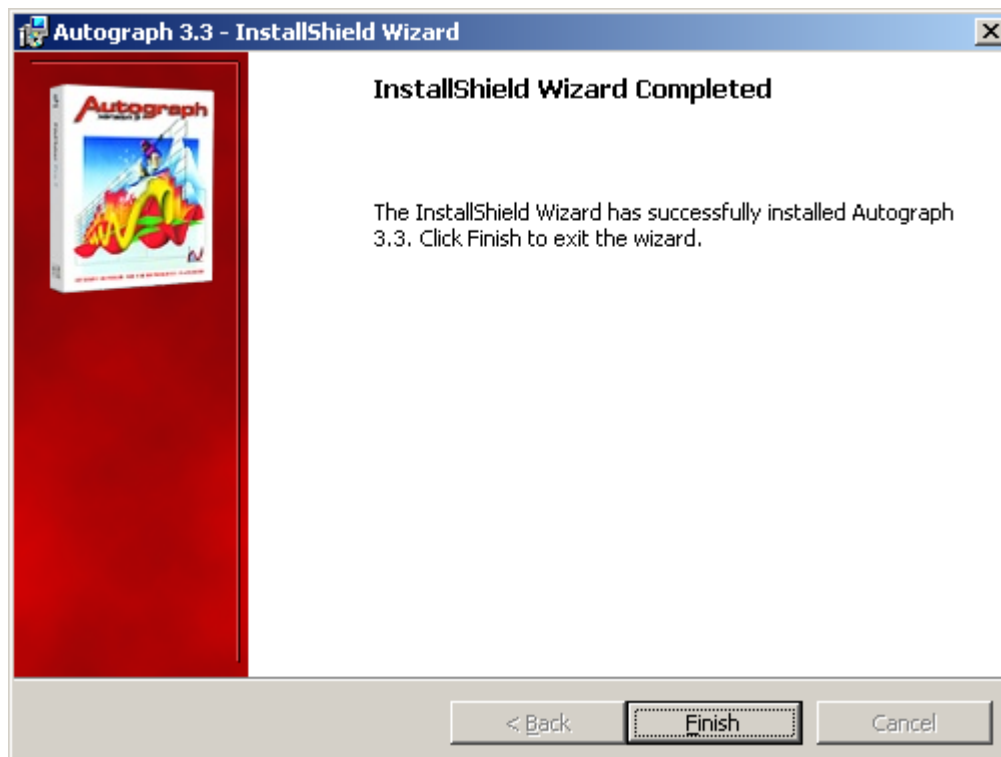
**Figure 9.** Web Activation dialog

14. The sequence of dialogs shown in Figure 10 will be displayed if activation is successful. If activation fails it will be necessary to activate using the NetworkLicenceViewer.exe application in the Tools folder on the CD.



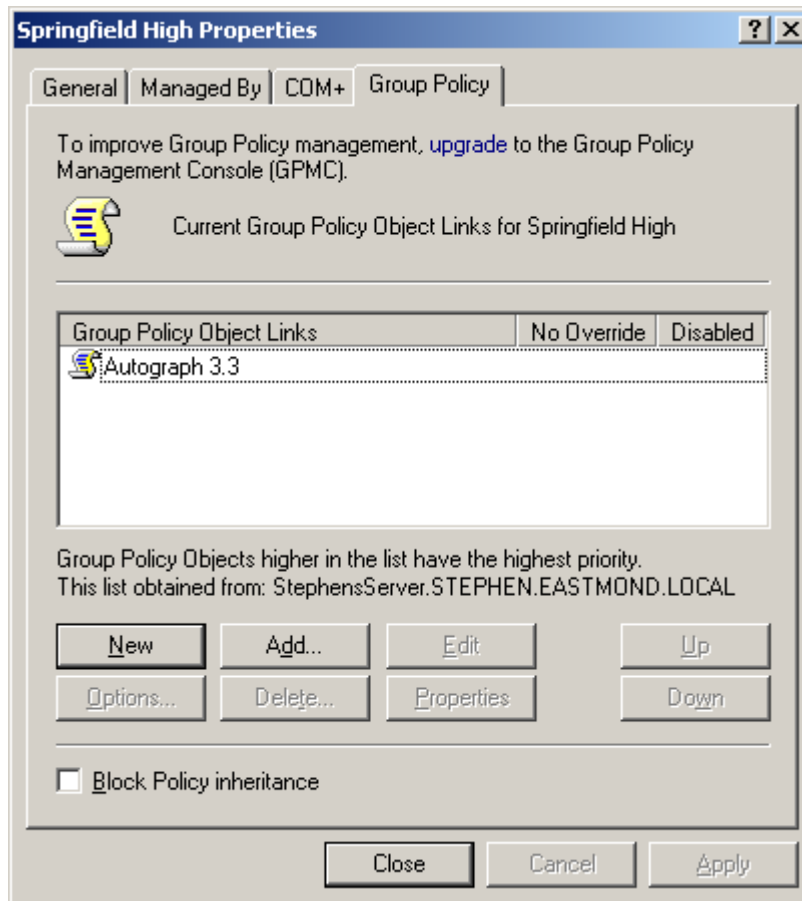
**Figure10.** Successful activation dialogs

15. When the installation is complete click Finish on the dialog shown in Figure 11.



**Figure 11.** The Installation Complete Dialog

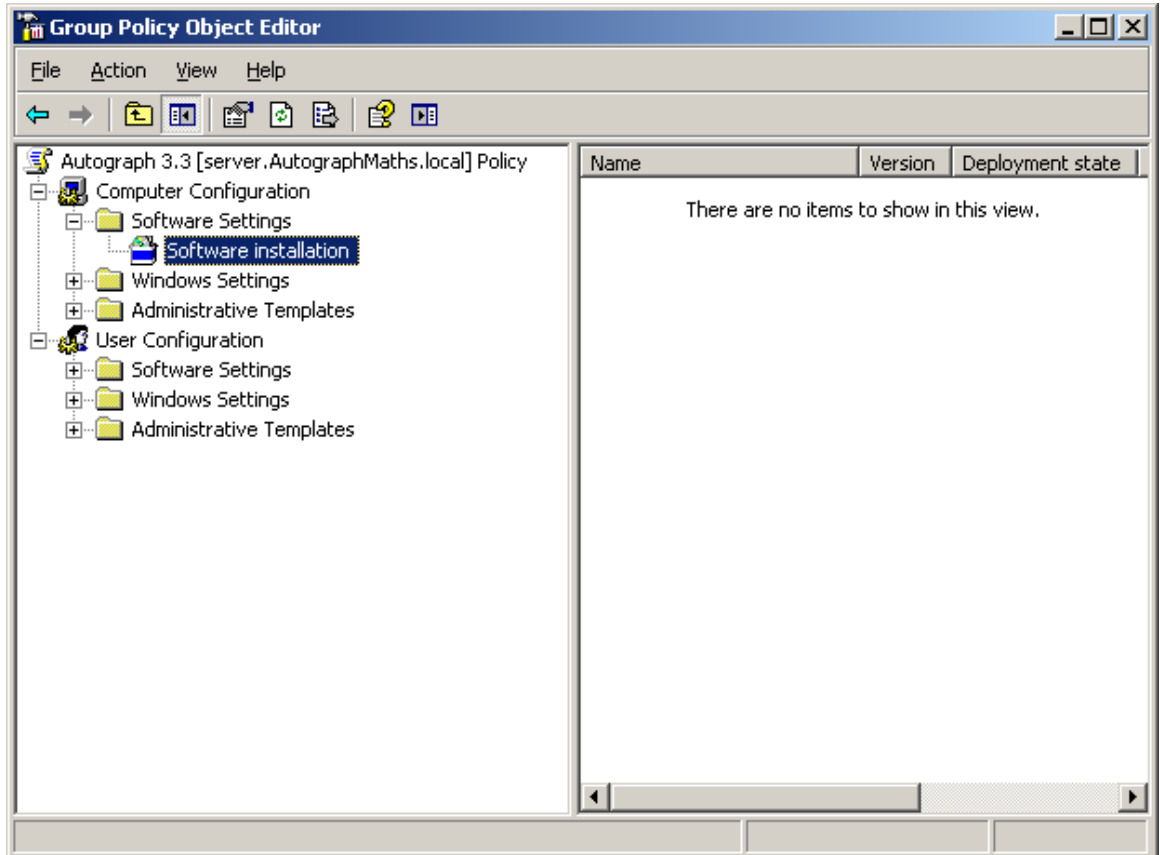
16. Click Start > All Programs > Administrative Tools > Active Directory Users and Computers.
17. Right-click on an Organizational Unit (OU) and select Properties from the menu.
18. Select the Group Policy tab.



**Figure 12.** Group Policy tab in the Organization Unit Properties dialog

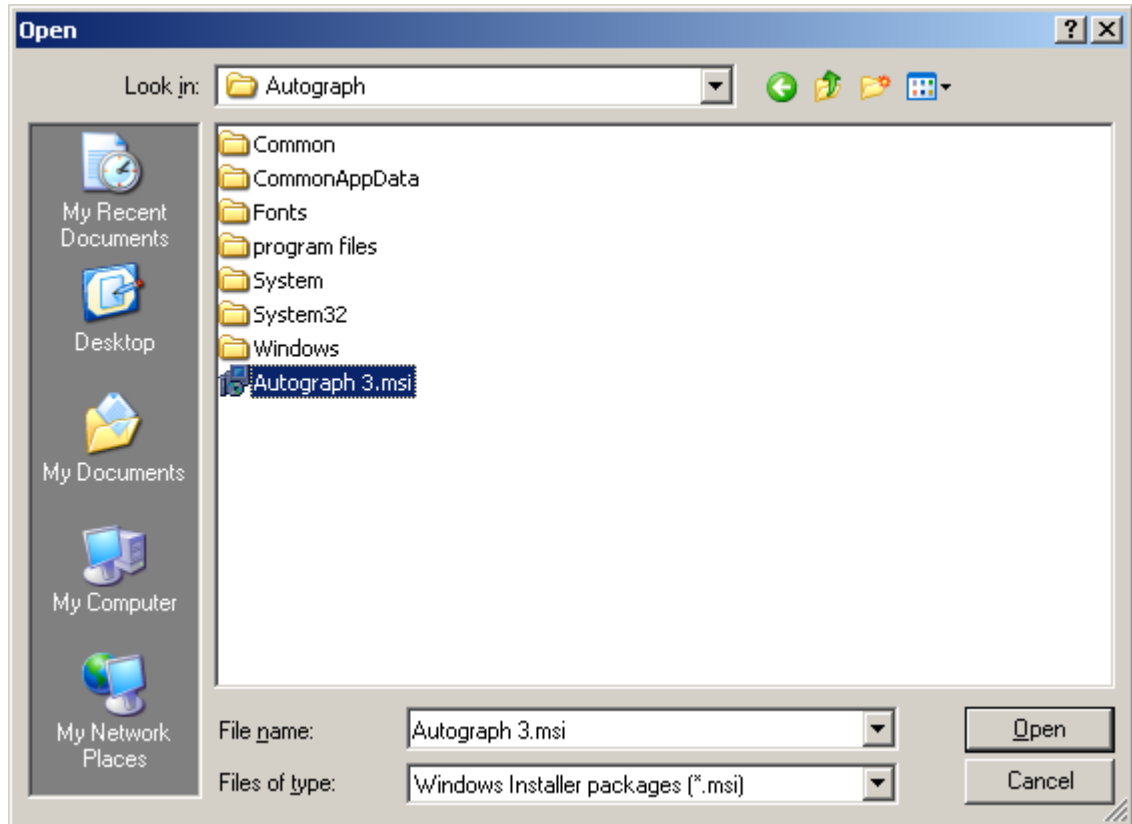
19. Select a Group Policy Object Link and click Edit. In this case there is an existing Group Policy Object Link titled "Autograph Remote Install". Note: If necessary, click New to create a new Group Policy Object Link.

20. Right-click on Software installation in Computer Configuration and select New > Package.



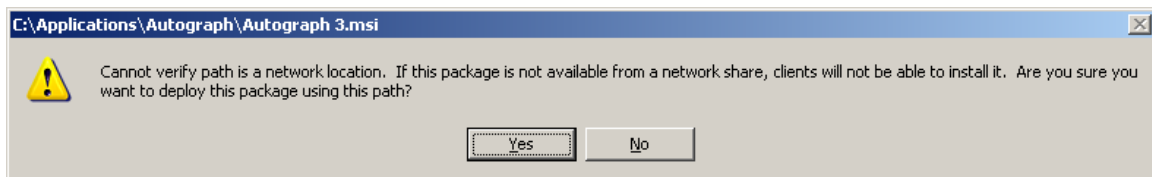
**Figure 13.** Selecting the Software installation option in the Group Policy Object Editor

21. The Open dialog box appears where you will need to select the Autograph 3.msi in the admin install location.



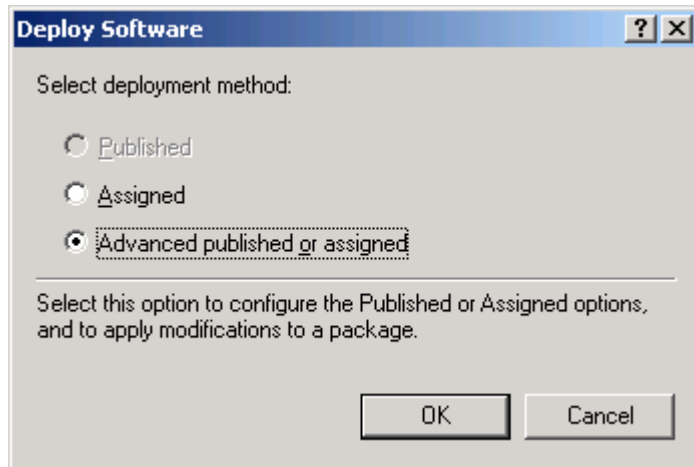
**Figure 14.** Select an .MSI file to install via the installer process.

22. After selecting the Autograph 3.msi file in the Open dialog box, click Open. If you receive the error message shown in Figure 15, you will need to click No and return to the Open dialog box and provide a UNC path to a shared folder on the server. If necessary, share said folder that holds the installer file. Note that you can automatically map to the .MSI file in a UNC fashion by navigating to the .MSI file via My Network Places in the left column of the Open Dialog box.



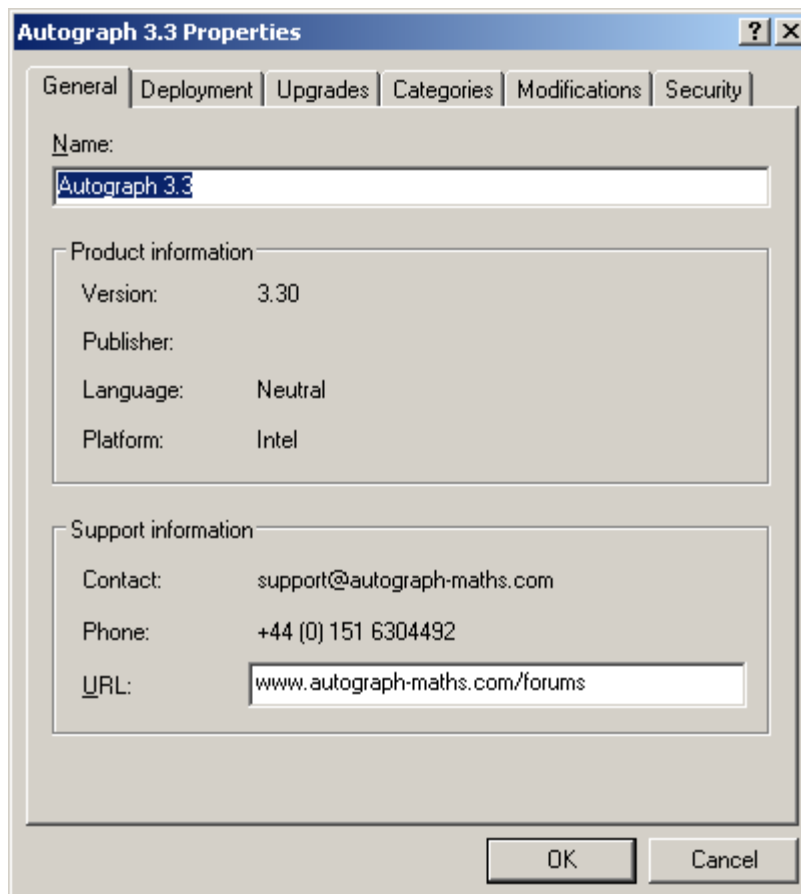
**Figure 15.** Error message if you attempt to implement an installer package not using a UNC path.

23. The Deploy Software dialog box appears (see Figure 16). There are 2 options from which you should choose Advanced and then click OK.



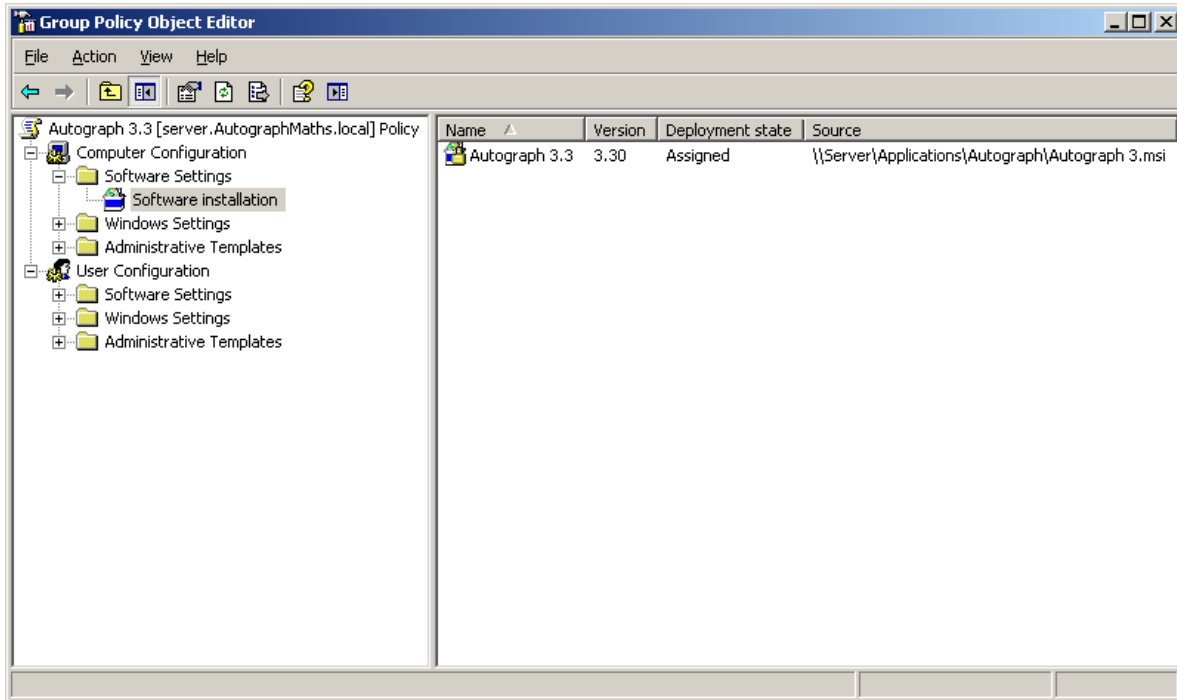
**Figure 16.** The Deploy Software dialog box.

19. In the Autograph 3.3 Properties dialog in Figure 17 click OK.



**Figure 17.** The Modifications tab.

20. The application to be installed appears as shown in Figure 18 in the Group Policy Object Editor.



**Figure 18.** Congratulations! The Windows installer package appears in the Group Policy Object Editor when Software installation is selected.

21. When you logon to the Windows Server network, assuming you're a user of a computer in the Organization Unit that the Group Policy Object (GPO) applies to, the application will automatically install silently.